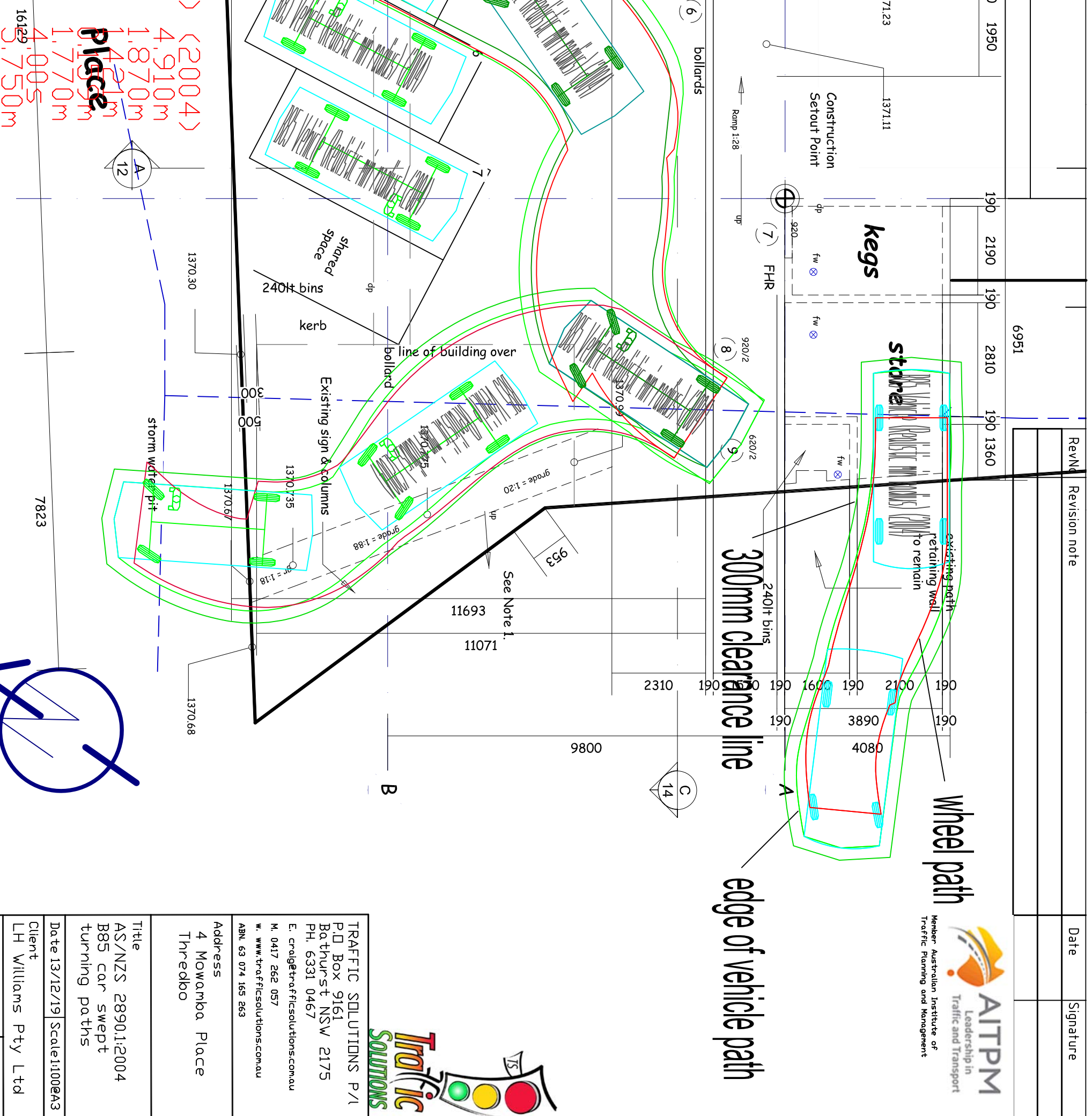


Rev#	Revision note	Date	Signature												
19120															
20920															
8070	191	4925	90	2400	90	1950	190	2190	190	2810	190	1360			
	11655														



Vehicle (Realistic min radius) (2004)

- all Length 4.910m
- all Width 1.870m
- all Body Height 1.421m
- Body Ground Clearance 1.770m
- Wheel Width 1.595m
- to Lock Time 4.005
- to Kerk Turning Radius 2.750m

Mowamba Place

16129

TRAFFIC SOLUTIONS P/1
 P.O. Box 9161
 Bathurst NSW 2175
 PH. 6331 0467
 E. craig@trafficsolutions.com.au
 M. 0417 262 057
 W. www.trafficsolutions.com.au
 ABN. 63 074 165 263

Address
 4 Mowamba Place
 Thredbo

Title
 AS/NZS 2890.1:2004
 B85 car swept
 turning paths

Date 13/12/19 Scale: 1:100 @ A3

Client
 LH Williams Pty Ltd

File No. 19.20.040 Dwg No. 6

